



Nestled in the charming area of Pavely Close, Chippenham, this well-presented one-bedroom terraced house offers a delightful living experience. Perfectly suited for individuals or couples, the property features a comfortable reception room that invites relaxation and social gatherings.

The bedroom is generously sized, providing a peaceful retreat, while the shower room is conveniently located to serve the needs of the household. The house benefits from double glazing and gas central heating, ensuring warmth and comfort throughout the year.

One of the standout features of this property is its well-maintained front and rear gardens, which offer a lovely outdoor space for gardening enthusiasts or those who simply wish to enjoy some fresh air. Additionally, there is parking available for one vehicle, adding to the convenience of this charming home.

## Viewing

Viewings Strictly by appointment with the sole selling agents Atwell Martin call or e-mail us today to confirm your appointment | 65 New Road, Chippenham, Wiltshire SN15 1ES

## Situation - Chippenham

Chippenham has a wide range of amenities to include High Street retailers plus supermarkets and retail parks and, in addition, there is a leisure centre with indoor swimming pool, library, cinema and public parks. Chippenham also benefits from excellent schooling with numerous primary and three highly sought after secondary schools. For those wishing to commute there is also a regular main line rail service from Chippenham station to London (Paddington) and

the West Country and the M4 motorway is easily accessed via Junction 17 a few miles north of the town.

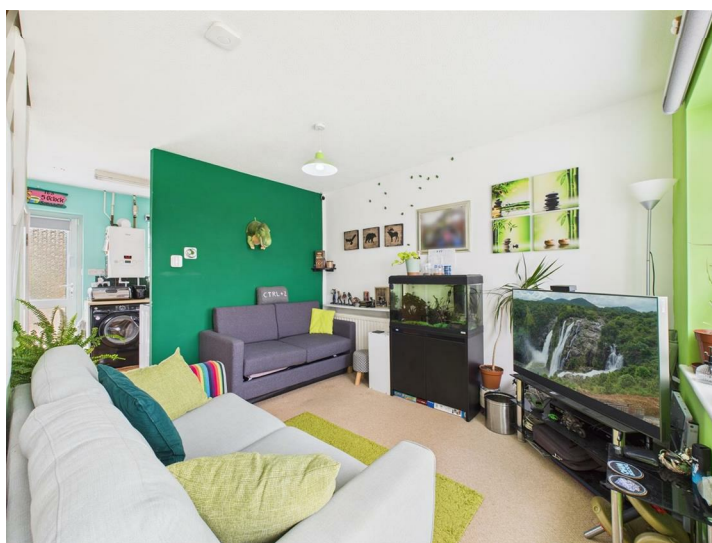
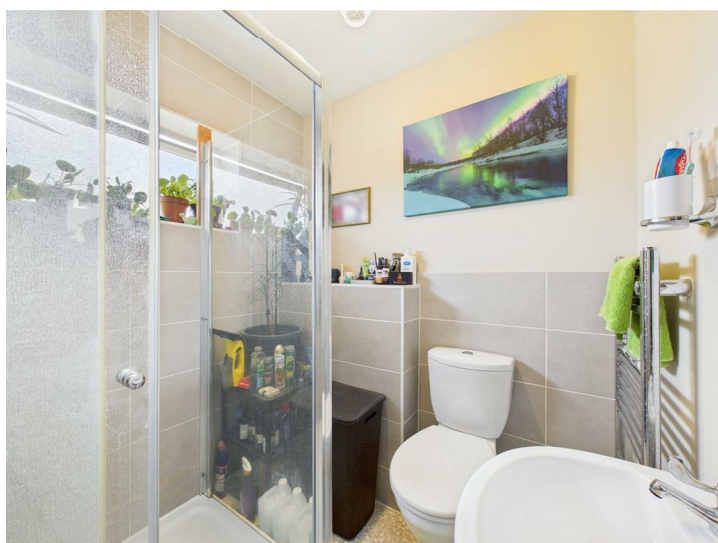
## Property Information

Utilities/Services - Mains Electric, Water & Drainage, Gas Central Heating

Wiltshire Council Tax - Band B

Tenure - Freehold







Ground Floor



First Floor

Approximate total area<sup>(1)</sup>

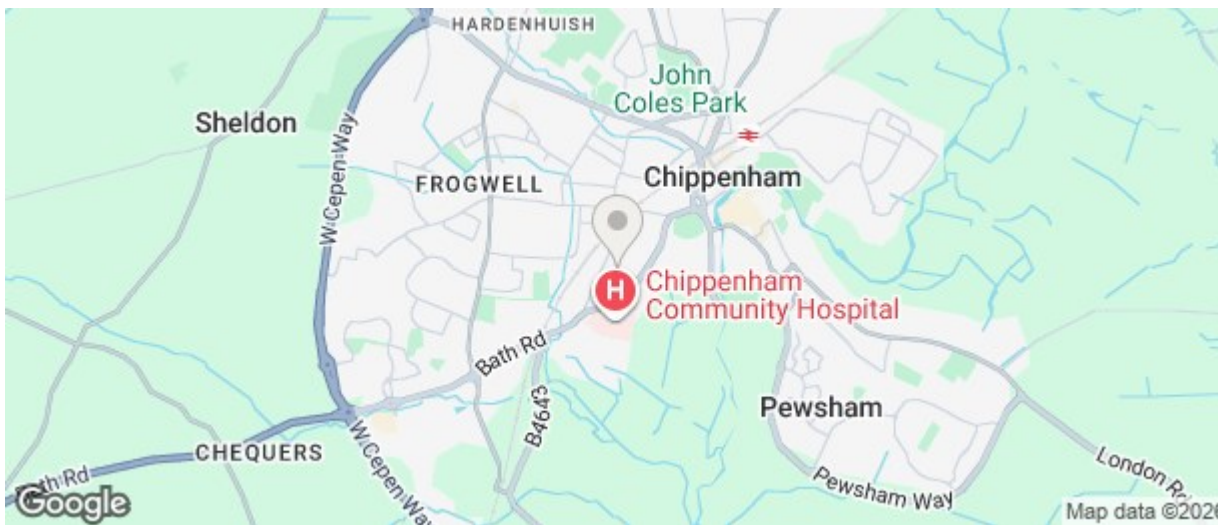
424 ft<sup>2</sup>

39.4 m<sup>2</sup>

(1) Excluding balconies and terraces

Calculations reference the RICS IPMS 3C standard. Measurements are approximate and not to scale. This floor plan is intended for illustration only.

GIRAFFE360



Energy Efficiency Rating		
	Current	Potential
Very energy efficient - lower running costs		
(92 plus) <b>A</b>		92
(81-91) <b>B</b>		
(69-80) <b>C</b>		69
(55-68) <b>D</b>		
(39-54) <b>E</b>		
(21-38) <b>F</b>		
(1-20) <b>G</b>		
Not energy efficient - higher running costs		
England & Wales		
EU Directive 2002/91/EC		
Environmental Impact (CO <sub>2</sub> ) Rating		
	Current	Potential
Very environmentally friendly - lower CO <sub>2</sub> emissions		
(92 plus) <b>A</b>		
(81-91) <b>B</b>		
(69-80) <b>C</b>		
(55-68) <b>D</b>		
(39-54) <b>E</b>		
(21-38) <b>F</b>		
(1-20) <b>G</b>		
Not environmentally friendly - higher CO <sub>2</sub> emissions		
England & Wales		
EU Directive 2002/91/EC		

The particulars are set out as a general outline only for the guidance of intended purchasers or lessees, and do not constitute, any part of a contract. Nothing in these particulars shall be deemed to be a statement that the property is in good structural condition or otherwise nor that any of the services, appliances, equipment or facilities are in good working order. Purchasers should satisfy themselves of this prior to purchasing